

System Requirements

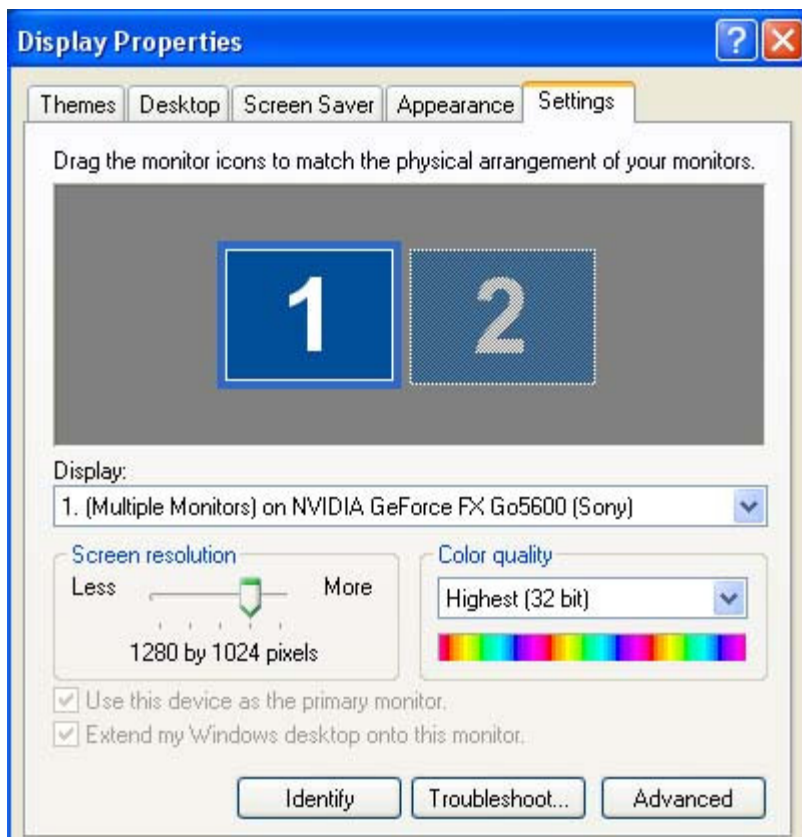
The Elwood viewer requires system capacities found in most computers manufactured since 2002. Although it has run on machines having a clock speed as slow as 700 megahertz, a processor speed of 1.2 gigahertz is the recommended minimum. Elwood's minimum recommended memory requirement is 500 megabytes — although users who foresee heavy use of its image-handling features would be well-advised to consider running the program on a machine possessing 1 gigabyte of RAM.

Elwood must be run with the screen resolution set at 1280 by 1024 pixels. This is a firm prerequisite. Owing to the complexity of its screen presentations, Elwood cannot be scaled down to work on screens having less resolution. (See below, "Screen resolution")

Elwood has been tested primarily on machines running Microsoft's Windows XP operating system. It will not run on Macintosh systems in native mode, although it will run on high-end Macintosh machines hosting Windows emulation software.

Elwood Viewer requires Microsoft's Internet Explorer version 5.5 or higher to operate. [\[Back\]](#)

Screen Resolution

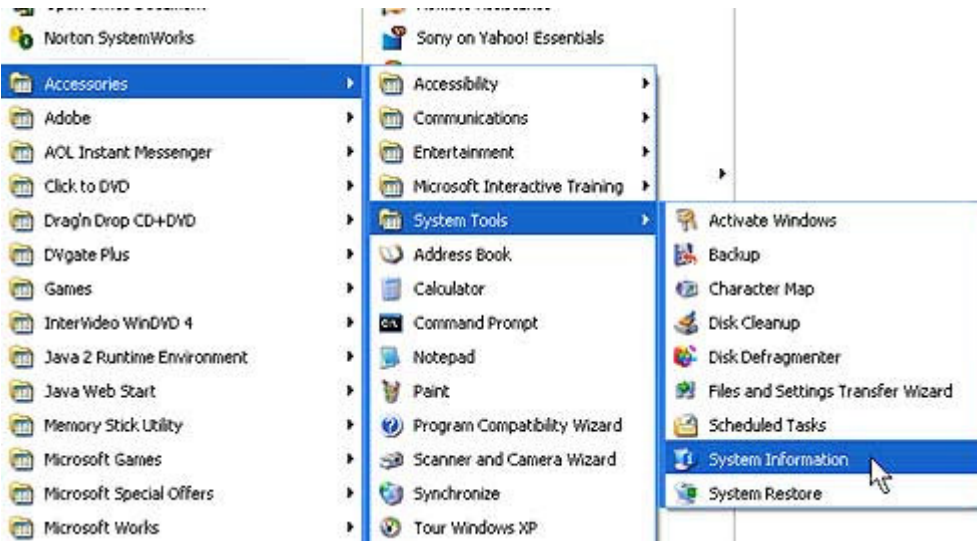


The Elwood Viewer calls for a screen setting of 1280 by 1024 pixels so that its concurrent display of text, document image, and a callout displaying an enlarged "image slice" and transcription of associated text will be legible. Unfortunately, not all computer displays have this level of screen resolution.

In order to determine if your display supports this resolution, left click anywhere on your computer's desktop. A menu will appear. Left click on the "Properties" item that appears as the last entry. A window titled "Display Properties" will open. Left click on the tab labeled "Settings," which will appear in the upper right-hand corner of this window. You should see a display similar to that pictured at the right. Notice the slider beneath the section of the window labeled "Screen resolution." If you can move this slider to a resolution equal to or greater than 1280 by 1024 pixels, do so and click "OK" to change your screen setting to the required resolution. If you wish, you may reverse this process to restore your original screen resolution upon completion of your session.

If the highest setting indicated on the slider is less than 1280 by 1024 pixels, the Elwood Viewer will not run successfully on your computer. [\[Back\]](#)

Memory and CPU Speed

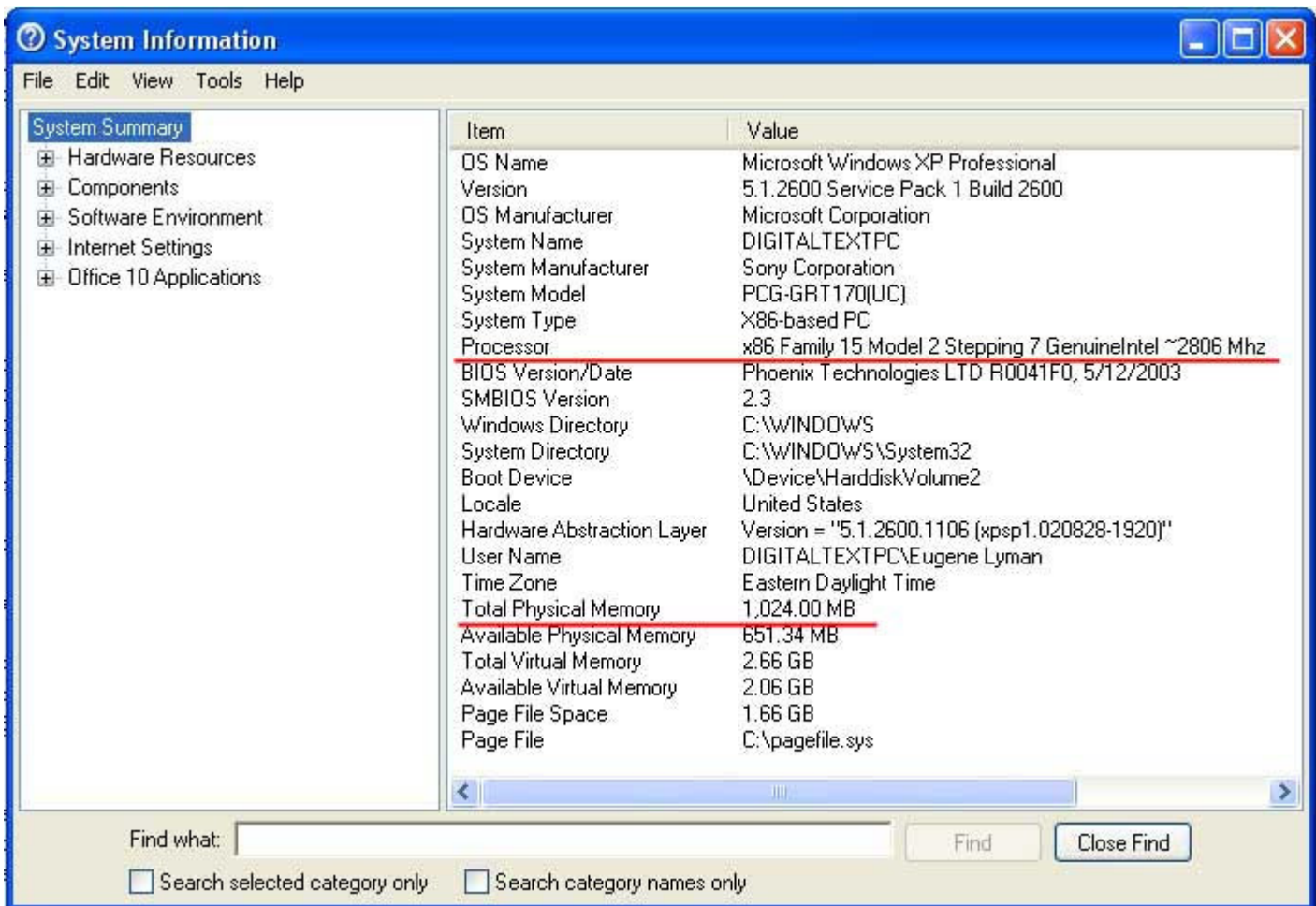


Although Elwood's requirements for memory (RAM) and processor (CPU) speed are less precisely set than its requirement for screen resolution, the parameters suggested above--500 megabytes of RAM and a processor speed of 1.2 gigahertz--have been found to be minimally appropriate when Elwood is run under Windows XP Professional.

To determine if your computer satisfies to these requirements, right click on the "start" button in the lower left-hand corner of your screen. Click on the "All programs" button that appears and then

click successively on the "Accessories," "System tools," and "System information" tabs as illustrated.

A window such as that pictured below should appear in response to these actions. It provides a summary of your computer's capacities. You should look closely at two items that have been underlined in red for emphasis in this illustration: "Processor" and "Total Physical Memory." The first of these rows should end with the figure "1200 Mhz" or higher and the second with the figure "512.00 MB" or higher. If both of these conditions and the screen resolution requirement are met, you should be able to run Elwood on your computer.



[\[Back\]](#)

Installing Elwood

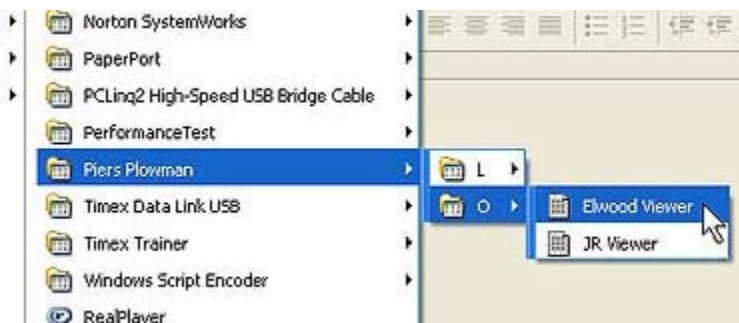
In order to access Elwood through the program menu as you do when you initiate JR, you will need to execute an install program that is located on the CD-ROM. Before doing this, however, you should satisfy yourself that your computer is capable of running Elwood (See "System requirements" in the "Preliminaries" menu).

If it does, begin by accessing the uppermost directory on the CD-ROM. Locate within this directory the file named "installRunElwood" and double-click on its icon. This will execute the install program for Elwood. Once it completes its work, you will be ready to start Elwood.

[\[Back\]](#)

Starting the Program

After you have run the install



routine discussed in "Installing Elwood" above, you should be able to access Elwood through your program menu. With the CD-ROM in your CD-ROM drive, left click on the green and white "start" button in the lower left corner of the Windows screen. Move your cursor over "All Programs" and then move to "Piers Plowman" and from there to the MS sigil of the edition that you wish to view and finally to the Elwood viewer. (If you like, you can right click on either or both viewers and save an icon on your desktop from which to start either JR or Elwood.)

You will note that your screen flashes a black rectangle as the program starts. This occurs because Elwood is being started in "batch" mode. Although it is possible to start the program by clicking on the "elwoodShellQL.htm" file as it appears on the CD, this practice should be avoided since it will not open the program in a true fullscreen environment. Elwood's screen effects and its proper display of text and images count on Internet Explorer being initiated in what Microsoft calls "kiosk mode." This, in turn, can only be achieved if IE is initiated in batch mode -- as it is when you follow the directions cited above.

[\[Back\]](#)

.PDF help files

The Elwood Viewer is designed to seek its help and information files from the website of the Society for Early English and Norse Electronic Texts (SEENET). This design choice, which requires an active internet connection, was made to insure that users of the Elwood Viewer would have the most up-to-date information about the program and its versions -- and so that future enhancements of its tools for text analysis can be made available through the internet.

Since internet connections may not always be accessible, downloadable .PDF files reflecting the substance of the online help can be made procured by right-clicking on the following URL reference and saving the .PDF files to which it points on your hard drive.

www.jefferson.village.virginia.edu/seenet/elwoodInfo/

[\[Back\]](#)

Exiting the program

Because the Elwood Viewer employs Microsoft's Internet Explorer as its display interface, closing



the program is normally a two-step process. First, click on the "Exit" button that is displayed in the lower right-hand corner of the screen. This will cause a small window to open, pictured on the right, that asks you whether you wish to close the program. Respond by clicking "Yes." Elwood may also be closed, without the display of this window, by pressing the "alt" and "F4" keys simultaneously. If you choose this method, take care to press "alt+F4" only once, since this combination will close other programs that may have running concurrently with Elwood. [\[Back\]](#)